

The leading supplier of complete timber connection systems

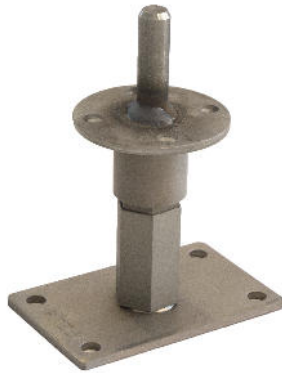


Bestseller 2015





10529.1090



10521.1090



10530.1090

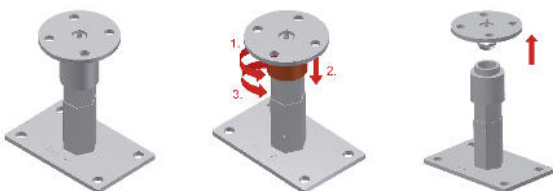


Post bases Plug-in system Z

Turn – Click, the new innovative post base system.

With few handlings, without time-consuming and inconvenient screwing the new plug-in system allows an efficient solution of assembly. Maximal load capacities in compression, traction and horizontal stresses are guaranteed through the optimal material thickness of the post base. A height adjustment is possible even when mounted and under heavy load.

Item no.	Upper plate mm	Lower plate mm	Thread M 24 low.	Boreholes Ø 13 mm bottom	Boreholes Ø 10.5 mm top	Adjustment range mm	Version	CE
10529.1090	Ø 96 x 8	160 x 100 x 8	90	4	4	141 - 201	Centring spike	requested
10521.1090	Ø 96 x 8	160 x 100 x 8	90	4	4	141 - 201	Mandrel Ø 20 x 65 mm	requested
10530.1090	Ø 96 x 8	160 x 100 x 8	90	4	4	141 - 201	Tube Ø 42,4 x 70 mm	requested



Installation instruction: The pre-assembly of the post base is already performed in the workshop and provides for a quick and comfortable work on the building site. The innovative Pitzl's plug-in system can be smoothly and fast locked and unlocked. The upper plate can with only few gestures be separated from the rest of the connector.

- Turn the fastening anticlockwise up to stop.
- Press fastening down.
- Press fastening further anticlockwise.



10930.1000



10930.1600



Post bases, System 10930

To simplify assembly still further, we have developed the 10930 item range. The upper parts have a tube diameter of 42.4 mm. They are simply inserted into the wood post and fastened with 4 fully-threaded $\varnothing 10 \times 120$ mm wood screws. This saves you valuable assembly time while providing the typical values regarding compressive, tensile and transverse forces, and you can still continue to use our wood twist drill bit or your joinery machine to make the required borehole in the support. The patented upper part makes for an exceptionally wide adjustment range in the post bases of the 10 930 / 10 931 series. Of course, the upper part can also be used as a post-purlin connection. A versatile and combinable support foot, which remains height-adjustable even when mounted and under heavy load. The use of additional lock nuts increases the rigidity of the connection.

Item no.	Upper plate in mm	Lower plate in mm	Thread, M24 low.	Thread, M24 upp.	Boreholes $\varnothing 13$ mm bottom	Boreholes $\varnothing 12$ mm top	Adjustment range, mm	Mandrel, tube $\varnothing 42.4$ mm	Special features	CE	Suitable cover sleeve item no. 10834.____
10930.1000	$\varnothing 100 \times 8$	$160 \times 100 \times 8$	65	150	4	4	170 - 285	130		*	.3001
10930.1600	$\varnothing 100 \times 8$	$160 \times 100 \times 8$	35	150	4	4	110 - 200	130	Short version	*	.1060

Installation instruction: For post bases with $\varnothing 42.4$ mm tube, drill a 130 mm hole in the cross-grained wood using the $\varnothing 42.5$ mm drill (item no. 10938.00) or a joinery machine. The tube is manually inserted into the cross-grained wood and fastened with 4 fully-threaded plate screws, $\varnothing 10 \times 120$ mm. No additional assembly tools required!



The upper threaded rod (M24 x 150 mm right) is screwed in through the upper plate and secured with a nut. This enables rough adjustment of 50 mm and fine adjustment of up to 65 mm following assembly via the right/left socket (complete continuous adjustability of 115 mm).

Also available: You find the corresponding assembly tools for example twist drill, shell-type milling cutter, etc. in our new catalogue Tools.



10920.1000



10921.1000



10921.1600

Post bases, Right / left threaded

A system for all applications! Threads of 20 to 30 mm and the most varied plate sizes with 6 to 15 mm material thickness - we have the perfect solution for any application (you will find M30 threads and 10 to 15 mm material thickness on page 5). Lift-off and lateral impacts can be counteracted with a straight screw connection into the cross-grained wood using fully-threaded 10 x 120 mm wood screws (with European technical approval) or a strut or lateral latches. Of course, post bases of the right/left-threaded system are still height-adjustable when mounted and under heavy load. The use of additional lock nuts increases the rigidity of the connection.

Item no.	Upper plate in mm	Lower plate in mm	Thread, M24 low.	Thread, M24 upp.	Boreholes Ø 13 mm bottom	Boreholes Ø 12 mm top	Adjustment range, mm	CE	Suitable cover sleeve item no. 10834.____
10920.1000	100 x 100 x 6	160 x 100 x 6	65	65	4	4	142 - 207	*	.2000

Item no.	Upper plate in mm	Lower plate in mm	Thread, M24 low.	Thread, M24 upp.	Borehole Ø 13 mm bottom	Borehole Ø 12 mm top	Adjustment range, mm	Special features	CE	Suitable cover sleeve item no. 10834.____
10921.1000	Ø 100 x 6	160 x 100 x 6	65	65	4	4	142 - 207		*	.2000
10921.1600	Ø 100 x 6	160 x 100 x 6	35	35	4	4	82 - 92	short version	*	.1060

For lateral fixation, the mandrel M24 x 110 mm is inserted into the timber column.



10921.1006



10930.1006

11008.2160
11008.2250

Post bases, Heavy-duty version

The in-house fabrication provides Pitzl to react fast and flexible to customers requests. Because of snow quantities that disproportionally fell in large parts of Europe it was necessary to develop and manufacture quickly a fitted post base.

The optimally designed constructive form allows very high load capacities for compression up to 381 kN and also for horizontal load actions up to 31.7 kN. The tried and trusted Pitzl screw connection concept or a strut with dowel boreholes guarantee a lift-off value up to 38.8 kN.

More detailed information can be found in our statics manual.

Item no.	Upper plate in mm	Lower plate in mm	Thread, M30 low.	Thread, M30 upp.	Boreholes Ø 15 mm bottom	Boreholes Ø 12 mm top	Adjustment range, mm	CE	Suitable cover sleeve item no. 10833._____
10921.1006	100 x 100 x 15	160 x 100 x 15	65	65	4	4	160 - 220	*	.2000

For lateral fixation, the mandrel M30 x 110 mm is inserted into the timber column.

Item no.	Upper plate in mm	Lower plate in mm	Thread, M30 low.	Thread, M30 upp.	Boreholes Ø 15 mm bottom	Boreholes Ø 12 mm top	Adjustment range, mm	Mandrel, tube Ø 42.4 mm	CE	Suitable cover sleeve item no. 10833._____
10930.1006	100 x 100 x 15	160 x 100 x 15	65	150	4	4	205 - 300	130	*	.3000

With tube.

Item no.	Upper plate in mm	Lower plate in mm	Height in mm	Tube Ø in mm	Boreholes Ø 17 mm bottom	Boreholes Ø 17 mm top	CE
11008.2160	140 x 140 x 15	140 x 140 x 15	160	82,5 x 5	4	4	requested
11008.2250	140 x 140 x 15	140 x 140 x 15	250	82,5 x 5	4	4	requested

With strut 120 x 140 x 10 with 2 boreholes Ø 13 mm.



11009.0180



11009.0100



11009.1100



11013.0100



11013.1200




11013.1300

Post bases, Threaded rods

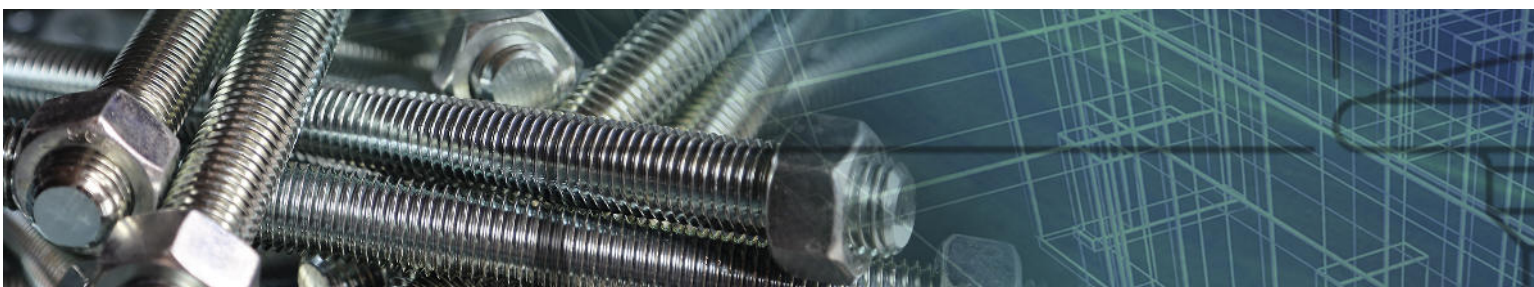
Designed for compressive, tensile and transverse forces

Item no.	Upper plate in mm	Lower plate in mm	Thread M20 mm	Thread M24 mm	Boreholes Ø 13 mm bottom	Boreholes Ø 12 mm bottom	Boreholes Ø 12 mm top	CE
11009.0180	80 x 80 x 5	100 x 100 x 6	150			4	4	
11009.0100	100 x 100 x 6	100 x 100 x 6	150			4	4	
11009.1100	100 x 100 x 6	160 x 100 x 6	150		4		4	
11013.0100	100 x 100 x 6	100 x 100 x 6		150		4	4	
11013.1200	100 x 100 x 6	160 x 100 x 6		250	4		4	*
11013.1300	100 x 100 x 6	160 x 100 x 6		330	4		4	*

- Installation instruction:  - The post base is fastened to the cross-grained wood with fully threaded plate screws, 10 x 120 mm.
- The lift-off value can be increased by increasing the effective thread length. Please refer to our design manual for the formula.
 - Fasten to foundation with tie bolts, Multi Monti etc. (must be certified separately).

Also available: You find the corresponding assembly tools for example twist drill, shell-type milling cutter, etc. in our new catalogue Tools.

- Lift-off protection either by welding the adjusting nut to the upper plate (order example: 11013.1201) or alternatively with a locking latch (order example: 11013.1202).





11041.0000



11044.0071



11046.0000

Post bases, hot-dip galvanized

Support bracket

Item no.	Dimensions mm	Support height mm	Boreholes Ø 12 mm	Oblong hole Ø 11 x 22
11041.0000	85 x 200 x 80 x 6	65	4	2

Post bases for fence posts

heavy-duty version

Item no.	Clearance mm	Ground plate mm	Latches mm	Boreholes Ø 11 mm
11044.0071	71	60 x 8 x 210	60 x 6 x 200	8
11044.0091	91	60 x 8 x 210	60 x 6 x 200	8

Post anchor Atlas

2 parts, for doweling

Item no.	Material mm	Total height mm	Support height mm	Minimum wood thickness mm	Borehole Ø 11 mm (per bracket)
11046.0000	60 x 5	139	33	40	5





31105.0000



31210.0000



31102.0000



31253.0000

Balcony posts T - iron, galvanized

Item no.	Bottom plate mm	Height mm	Boreholes Ø 12 mm bottom	T-iron mm	Boreholes Ø 6.5 mm
31105.0000	100 x 100 x 10	400	4	45 x 45 x 5	6

Balcony posts C - profile, hot-dip galvanized

Item no.	Bottom plate mm	Height mm	C-profile	Oblong boreholes Ø 13 x 26 mm
31210.0000	160 x 100 x 10	1000	50 x 30 x 15 x 3	2

For front-side doweling, including a plastic cap and two aluminium clip latches 160 x 40 x 5.

Balcony posts with square tube 30 x 30 x 2 mm, hot-dip galvanized

Item no.	Bottom plate mm	Height mm	Tube mm	Oblong boreholes Ø 13 x 26 mm
31102.0000	180 x 60 x 10	1000	30 x 30 x 2	2

For doweling, incl. a plastic cap.

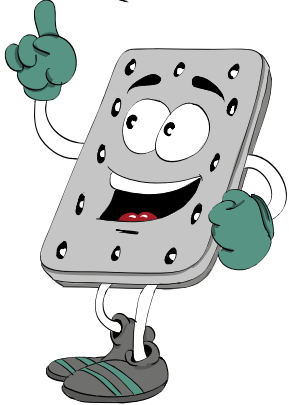
Balcony posts with rectangular tube 50 x 30 x 2 mm, hot-dip galvanized

Item no.	Bottom plate mm	Height mm	Tube mm	Oblong boreholes Ø 13 x 26 mm
31253.0000	160 x 100 x 10	1000	50 x 30 x 2	2

For front-side doweling, incl. a plastic cap.



Alternatively the Pitzl HVP series 88004.0000 to 88322.0000 can be ordered with uplift-protection.



Connectors HVP

Wood-to-wood connections

Optimal distances to the edges and variable screws length ensure accuracy of fit for each timber section.

Item no.	Dimensions w x h x d (mm)	Number of screws	Screws size	Minimal timber section with screws Ø 4.5 x 50 (mm)		Characteristic load capacity*		Packing unit	CE
				Header	Joist	Ø 4.5 x 50	Ø 4.5 x 80		
88004.0000	25 x 40 x 12	6	Ø 4.5 x 50 - 80	60 x 50	45 x 50	2.42	3.78	20	*
88006.0000	25 x 60 x 12	8	Ø 4.5 x 50 - 80	60 x 70	45 x 70	4.83	7.56	20	*
88008.0000	25 x 80 x 12	10	Ø 4.5 x 50 - 80	60 x 90	45 x 90	7.25	11.3	20	*
88010.0000	25 x 100 x 12	12	Ø 4.5 x 50 - 80	60 x 110	45 x 110	9.66	15.1	20	*
88107.0000	40 x 70 x 12	10	Ø 4.5 x 50 - 80	60 x 80	50** x 80	7.25	11.3	10	*
88109.0000	40 x 90 x 12	14	Ø 4.5 x 50 - 80	60 x 100	50** x 100	9.66	15.1	10	*
88111.0000	40 x 110 x 12	16	Ø 4.5 x 50 - 80	60 x 120	50** x 120	12.1	18.9	10	*
88113.0000	40 x 130 x 12	18	Ø 4.5 x 50 - 80	60 x 140	50** x 140	14.5	22.7	10	*
88115.0000	40 x 150 x 12	22	Ø 4.5 x 50 - 80	60 x 160	50** x 160	19.3	30.2	10	*

*F_{2,Rk} (kN) for GL24h with fully threaded screws: Ø 4.5 x 50 with effective thread length of 45 mm and Ø 4.5 x 80 with effective thread length of 74 mm.

For other screws and thread lengths or wood based materials: cf. design manual.

** Valid for part 2 (with the tongue) fixed at the end grain, otherwise 60 mm.

Item no.	Dimensions w x h x d (mm)	Number of screws	Screws size	Minimal timber section with screws Ø 5 x 60 (mm)		Characteristic load capacity*		Packing unit	CE
				Header	Joist	Ø 5 x 60	Ø 5 x 100		
88210.0000	60 x 100 x 12	18	Ø 5 x 60 - 100	70 x 120	80 x 120	19.6	32.3	10	*
88214.0000	60 x 140 x 12	24	Ø 5 x 60 - 100	70 x 160	80 x 160	31.4	51.7	10	*
88318.0000	80 x 180 x 12	34	Ø 5 x 60 - 100	70 x 200	100 x 200	47.1	77.5	10	*
88322.0000	80 x 220 x 12	44	Ø 5 x 60 - 100	70 x 240	100 x 240	62.7	103.3	10	*

*F_{2,Rk} (kN) for GL24h with fully threaded screws: Ø 5 x 60 with effective thread length of 54 mm and Ø 5 x 100 with effective thread length of 94 mm.

For other screws and thread lengths or wood based materials: cf. design manual.



88420.0000



88430.0000



88445.0000



Connectors Heavy-duty HVP

The new disposed inclined drilled holes as well as the possibility of using different screws lengths guarantee the adaptability to the small timber cross-sections too.

Item no.	Dimensions w x h x d (mm)	Number of screws	Screws size	Minimal timber section with screws Ø 8 x 160 (mm)		Characteristic load capacity*		Packing unit	CE
				Header	Joist	Ø 8 x 160	Ø 8 x 200		
88420.0000	120 x 200 x 20	16	Ø 8 x 100 - 200	160 x 220	140 x 220	49.8	61.6	4	*
88425.0000	120 x 250 x 20	20	Ø 8 x 100 - 200	160 x 270	140 x 270	74.6	92.3	4	*
88430.0000	120 x 300 x 20	24	Ø 8 x 100 - 200	160 x 320	140 x 320	99.5	123.1	4	*
88435.0000	120 x 350 x 20	28	Ø 8 x 100 - 200	160 x 370	140 x 370	124.4	153.9	4	*
88440.0000	120 x 400 x 20	32	Ø 8 x 100 - 200	170 x 420	140 x 420	149.3	184.7	4	*
88445.0000	120 x 450 x 20	36	Ø 8 x 100 - 200	170 x 470	140 x 470	174.2	215.5	4	*
88450.0000	120 x 500 x 20	40	Ø 8 x 100 - 200	170 x 520	140 x 520	199.1	246.2	4	*
88455.0000	120 x 550 x 20	44	Ø 8 x 100 - 200	170 x 570	140 x 570	223.9	277.0	4	*
88460.0000	120 x 600 x 20	48	Ø 8 x 100 - 200	170 x 620	140 x 620	248.8	307.8	4	*

*F_{2,Rk} (kN) for GL24h with fully threaded screws: Ø 8 x 160 with effective thread length of 150 mm and Ø 8 x 200 with effective thread length of 190 mm.

For other screws and thread lengths or wood based materials: cf. design manual.

Heavy-duty HVP connectors are automatically delivered with uplift protection (2 screws Ø 6 x 20 mm and flat steel for uplift protection included).



88560.0000



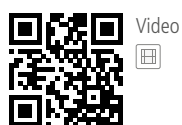
The heavy-duty HVP of the series 885 with a width of 140 mm are optimally suitable for wide beams (from 170 mm) under very high loads.

Available on pre-order.

Item no.	Dimensions w x h x d (mm)	Number of screws	Screws size	Minimal timber section with screws Ø 8 x 160 (mm)		Characteristic load capacity*		Packing unit	CE
				Header	Joist	Ø 8 x 160	Ø 8 x 200		
88540.0000	140 x 400 x 20	40	Ø 8 x 100 - 200	170 x 420	170 x 420	199.1	246.2	4	*
88545.0000	140 x 450 x 20	48	Ø 8 x 100 - 200	170 x 470	170 x 470	248.8	307.8	4	*
88550.0000	140 x 500 x 20	52	Ø 8 x 100 - 200	170 x 520	170 x 520	273.7	338.6	4	*
88555.0000	140 x 550 x 20	56	Ø 8 x 100 - 200	170 x 570	170 x 570	298.6	369.4	4	*
88560.0000	140 x 600 x 20	64	Ø 8 x 100 - 200	170 x 620	170 x 620	348.4	430.9	4	*

*F_{2,Rk} (kN) for GL24h with fully threaded screws: Ø 8 x 160 with effective thread length of 150 mm and Ø 8 x 200 with effective thread length of 190 mm.
For other screws and thread lengths or wood based materials: cf. design manual.

Heavy-duty HVP connectors are automatically delivered with uplift protection (2 screws Ø 6 x 20 mm and flat steel for uplift protection included).



Video



www.pitzl-connectors.com/videos/



Datasheet



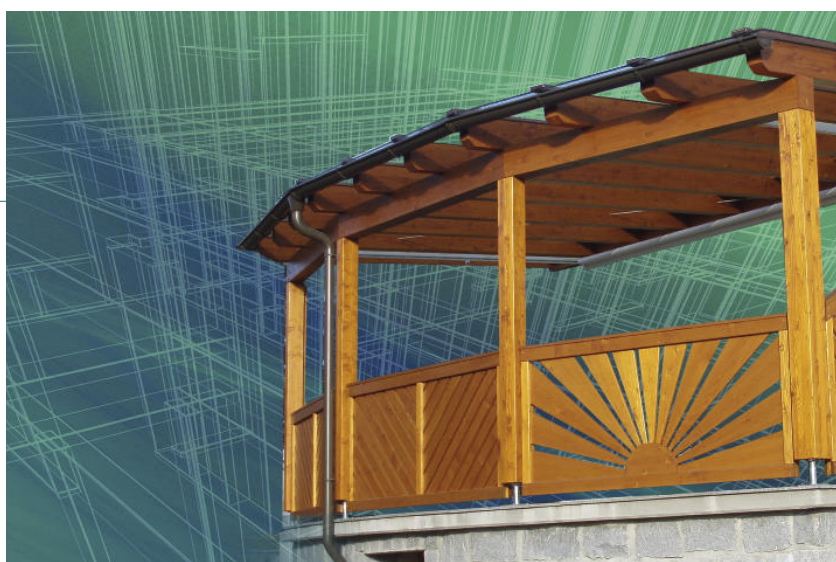
www.pitzl-connectors.com/produkte/verbinder/cat/schwerlast-hvp/

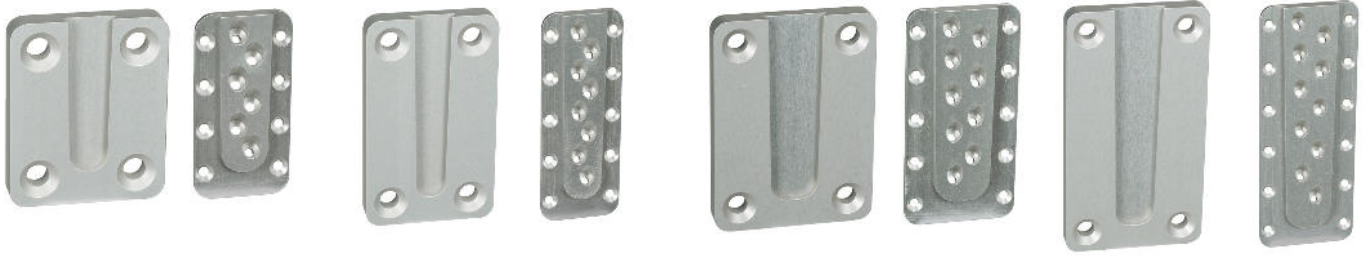


Downloads



www.pitzl-connectors.com/downloads/





Connectors HVP for steel or concrete connections

Standard HVP connectors

Equally sturdy and simple HVP connection to concrete or steel up to about 300 kN. An anchor plate with concrete anchors ensures that the forces are applied properly into the concrete element. The secondary joist connection is realised with a normal HVP connector part.

Item no.	Width (mm)		Connector height (mm)	Total thickness (mm)	Screws Joist (Wood)	Number of anchors Header (Concrete)	Minimal timber section with screws Ø 5 x 60 (mm)	Packing unit	CE
	Joist plate	Header plate							
88210.3000	60	90	100	18	9 pc. Ø 5 x 60 - 100	4	80 x 120	4	*
88214.3000	60	90	140	18	12 pc. 5 x 60 - 100	4	80 x 160	4	*
88318.3000	80	110	180	18	17 pc. Ø 5 x 60 - 100	4	100 x 200	4	*
88322.3000	80	110	220	18	22 pc. Ø 5 x 60 - 100	4	100 x 240	4	*

Remark: Characteristic load capacity wood part: cf. Wood-to-wood connections. The load capacity of the concrete part (anchor and concrete) must be verified separately.

Standard HVP connectors for steel or concrete connection are automatically delivered with uplift protection (2 screws Ø 5 x 20 mm and flat steel for uplift protection included).

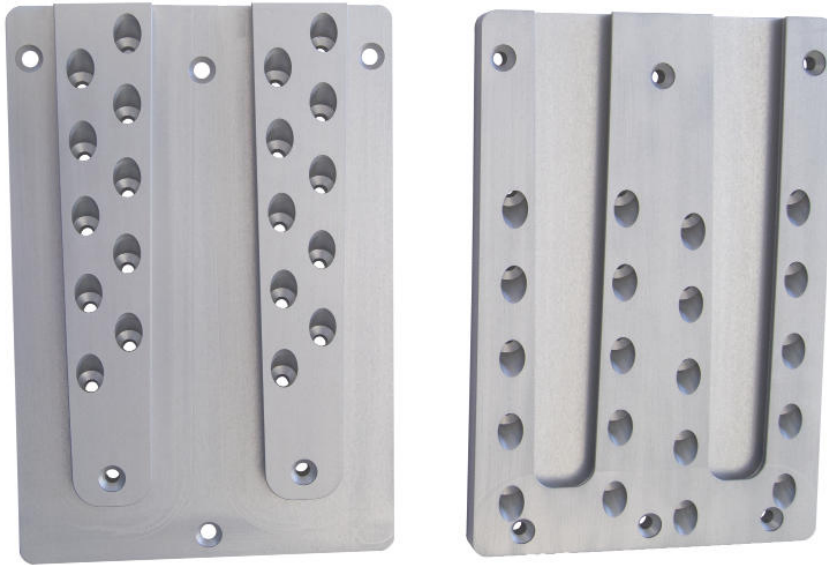
Heavy-duty HVP connectors

Item no.	Width (mm)		Connector height (mm)	Total thickness (mm)	Screws Joist (Wood)	Number of anchors Header (Concrete)	Minimal timber section with screws Ø 8 x 160 (mm)	Packing unit	CE
	Joist plate	Header plate							
88420.3000	120	150	200	25	8 pc. Ø 8 x 100 - 200	4	140 x 220	4	*
88430.3000	120	150	300	25	12 pc. Ø 8 x 100 - 200	4	140 x 320	4	*
88440.3000	120	150	400	25	16 pc. Ø 8 x 100 - 200	4	140 x 420	4	*
88450.3000	120	150	500	25	20 pc. Ø 8 x 100 - 200	6	140 x 520	4	*
88460.3000	120	150	600	25	24 pc. Ø 8 x 100 - 200	6	140 x 620	4	*

Remark: Characteristic load capacity wood part: cf. Wood-to-wood connections. The load capacity of the concrete part (anchor and concrete) must be verified separately.

Please note: Items no. 88450.3000 and 88460.3000 are not in stock and need to be pre-ordered!

Heavy-duty HVP connectors for steel or concrete connection are automatically delivered with uplift protection (2 screws Ø 6 x 20 mm and flat steel for uplift protection included).



88435.2000

Connectors Double HVP

Standard double HVP connectors

Available on pre-order.

Item no.	Dimensions w x h x d (mm)	Number of screws	Screws size	Minimal timber section with screws Ø 5 x 60 (mm)		Characteristic load capacity*		Packing unit	CE
				Header	Joist	Ø 5 x 60	Ø 5 x 100		
88210.2000	120 x 100 x 12	32	Ø 5 x 60 - 100	70 x 120	140 x 120	39.2	64.6	4	*
88214.2000	120 x 140 x 12	44	Ø 5 x 60 - 100	70 x 160	140 x 160	62.7	103.3	4	*
88318.2000	160 x 180 x 12	64	Ø 5 x 60 - 100	70 x 200	180 x 200	94.2	155.0	4	*
88322.2000	160 x 220 x 12	84	Ø 5 x 60 - 100	70 x 240	180 x 240	125.5	206.7	4	*

*F_{2,Rk} (kN) for GL24h with fully threaded screws: Ø 5 x 60 with effective thread length of 54 mm and Ø 5 x 100 with effective thread length of 94 mm.
For other screws and thread lengths or wood based materials: cf. design manual.

Standard double HVP connectors are automatically delivered with uplift protection (2 screws Ø 5 x 20 mm and flat steel for uplift protection included).

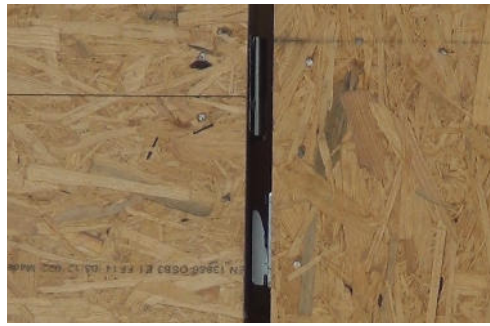
Heavy-duty double HVP connectors

Available on pre-order.

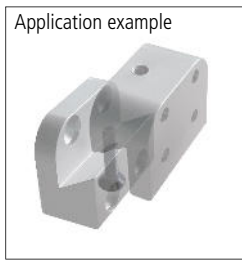
Item no.	Dimensions w x h x d (mm)	Number of screws	Screws size	Minimal timber section with screws Ø 8 x 160 (mm)		Characteristic load capacity*		Packing unit	CE
				Header	Joist	Ø 8 x 160	Ø 8 x 200		
88420.2000	240 x 200 x 20	28	Ø 8 x 100 - 200	160 x 220	260 x 220	99.5	123.1	4	*
88425.2000	240 x 250 x 20	36	Ø 8 x 100 - 200	160 x 270	260 x 270	149.3	184.7	4	*
88430.2000	240 x 300 x 20	44	Ø 8 x 100 - 200	160 x 320	260 x 320	199.1	246.2	4	*
88435.2000	240 x 350 x 20	52	Ø 8 x 100 - 200	160 x 370	260 x 370	248.8	307.8	4	*
88440.2000	240 x 400 x 20	60	Ø 8 x 100 - 200	170 x 420	260 x 420	298.6	369.4	4	*
88445.2000	240 x 450 x 20	68	Ø 8 x 100 - 200	170 x 470	260 x 470	348.4	430.9	4	*
88450.2000	240 x 500 x 20	76	Ø 8 x 100 - 200	170 x 520	260 x 520	398.1	492.5	4	*
88455.2000	240 x 550 x 20	84	Ø 8 x 100 - 200	170 x 570	260 x 570	447.9	554.1	4	*
88460.2000	240 x 600 x 20	92	Ø 8 x 100 - 200	170 x 620	260 x 620	497.6	615.6	4	*

*F_{2,Rk} (kN) for GL24h with fully threaded screws: Ø 8 x 160 with effective thread length of 150 mm and Ø 8 x 200 with effective thread length of 190 mm.
For other screws and thread lengths or wood based materials: cf. design manual.

Heavy-duty double HVP connectors are automatically delivered with uplift protection (2 screws Ø 6 x 20 mm and flat steel for uplift protection included).



88630.0000



88060.0000

Step connectors SVP

Stepped connectors anodised

Connectors with multiple applications for staircase construction. Elegant visual design and high load-carrying capacities provide a clean and functional connecting option for the precise and fast assembly of wooden steps. A countersunk head screw DIN 7991 M5 x 25 mm is included in the scope of delivery.

Item no.	Height mm	Width mm	Depth in mm	Design value	Drilled holes Ø 4.7 mm
88630.0000	30	40	26	about 1.7 kN	8

Wall connectors WVP

Wall connectors

The ideal connection for prefabricated wood wall elements - easy, quick and cost-effective.

When combined with solid workmanship, our wall connectors ensure high resilience (static values are available).

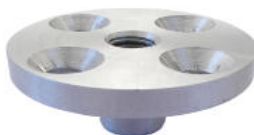
Easy handling implies important savings for the user - thanks either to quick and easy assembly on site or to pre-assembly in the workshop. Material: S355 galvanised

Item no.	Base plate with suspension hook in mm	Boreholes Ø 6.5 mm	Anchor plate with recess for hook in mm	Boreholes Ø 6.5 mm	Overall thickness when combined in mm	Characteristic value* traction	Characteristic value* shearing to the side
88060.0000	60 x 80 x 5	6	60 x 80 x 3	4	19	9.6 kN	11.4 kN

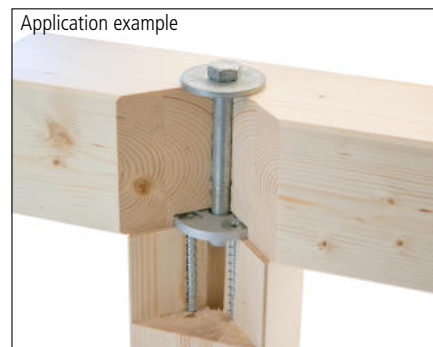
*tested with fully threaded screws Spax 6 x 60 mm.



88716.0000



88715.0000



SPP post-purlin connectors

You need stable and reliable connections that you can process as well as re-stress in a quick and precise way.

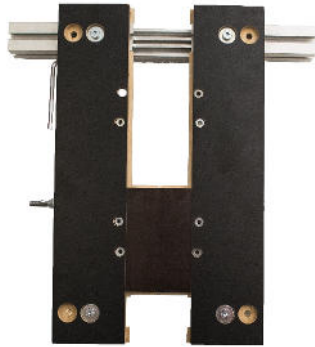
The Pitzl SPP connectors ensure a perfect hold.

SPP post-purlin connectors - the ideal solution for tensile connections or wood connections with combined load types, such as post-purlin connections. SPP is a retensionable wood connection that can be loosened and removed without problems. According to the ETA, a straight screw connection is permitted even in cross-grained wood. This makes it possible to increase the tensile load-carrying capacity by increasing the effective thread length at the wood screw. Dimensioning details can be found in the Pitzl Design Manual at www.pitzl-connectors.com.

Advantages of the SPP connectors

- Easy and precisely fitting process
- Problem-free disassembly
- Can be re-stressed
- Usable at the end grain too

Item no.	Upper plate mm	Boreholes Ø 12 mm, countersunk	Tube mm	Core thread	Minimal timber dimensions mm	Material	CE
88716.0000	Ø 100 x 6	4	Ø 42.4 x 70	M 16		zinc plated steel	*
88715.0000	Ø 80 x 8		Ø 24 x 20		90 x 90	anodised aluminium	



58000.0000



58400.0000

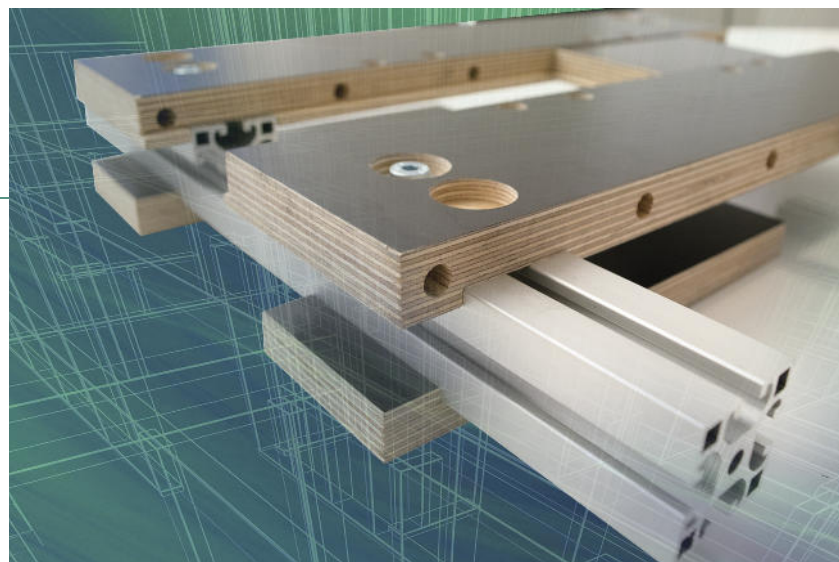
Milling and assembly templates

Milling and assembly templates for all connector sizes of HVP series.

The flexible and easily adjustable templates enable a quick adjustment of connector width.

Following correct adjustment, milling and assembly works can begin without any further adaptation being required.

Item no.	Connector width	Suitable for connector sizes item no.
58000.0000	25 - 80 mm	88004.0000 - 88322.0000
58400.0000	100 - 140 mm	88420.0000 - 88560.0000





55650.0000



55650.1000



55650.2000

Wall support

3 parts, electroplated, fine adjustment via left/right thread, tube 45 x 45 mm

Item no.	Adjustment range mm	Thread	Weight
55650.0000	1600 - 4200	M 20	12.5 kg

Indication: Calculation software available on request.

Distance piece

from tube 40 x 40 x 2 x 1265 mm for optimum alignment of the wall elements

Item no.
55650.1000

Lever

for easier adjustment of the wall support

Item no.
55650.2000





Both beam pullers are delivered with our high quality transport box.

Beam puller with turn-adaptor

Fix, tighten, done!

Convenient work

Lay the turn-adaptor on the object and screw. Differently arranged boreholes allow a smoothly fastening on timber or masonry. The mounted to the adaptor butt strap serves for the fastening in grooves or to edges.

Therefore Pitzl beam puller provides a perfect stability for the processing of solid wood elements, alveolar elements and wood soft fiber elements.

Item no.	Span mm	Boreholes Ø 8 mm	Max. load capacity
55850.0000	560 - 720	16	20 kN

Advantages

- Can be fixed everywhere
- Slight damage of timber
- Easy handling
- Fastening in every angles

Beam puller with hooks

Fix, tighten, ready!

Item no.	Span mm	Boreholes Ø 8 mm	Max. load capacity
55851.0000	600 - 760	2	20 kN

Advantages

- Through the additional bore fastening by one screw is possible.
- Special Pitzl hooks for easy and non destructive removal.

Easy setup for gentle and precise processing of wooden surfaces and wooden beams.

Both timber puller ratchets allow quick switch between different tool attachments.

Accessories

Item no.	Description
55850.1000	Hook
55850.2000	Bracing strip tensioner 1 - 8 mm
55850.2100	Adapter ring for bracing strip tensioner 55850.2000





55860.0000



55865.0000



Lifting clamps PowerClamp II D40/90

The lifting clamps - the latest innovation in timber construction.

Enables you easily to raise wooden beams and massive edge glued panels through a simple and quick fastening of the lifting clamps.

Drill, apply, lift!

Advantages of PowerClamp II D40/90

- Major time savings
- No other lifting gear needed
- No damage of wood surface
- No soiling

Scope of supply

- 2x PowerClamp II D40/90
- 1x Drill (40 mm)
- 1x High quality transport box

With a load capacity of up to 1000 kg per clamp the low-maintenance lifting clamp PowerClamp II D40/90 is your optimal partner for each construction project. Despite the low weight of handy 1.8 kg (per clamp) it is extremely robust.

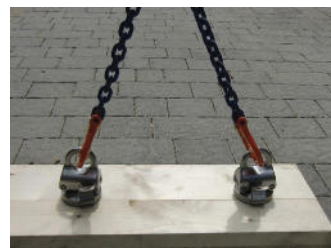
Application

Application is easy as can be. A drill-hole size of just 40 mm is sufficient. Insert the clamps and you can already effortlessly lift the structural element.

Item no.
55860.0000

Accessories

Item no.	Description	Ø mm	Working length mm	Overall length mm
55865.0000	Twist drill „Spur Bit“	40	90	150





Fast, simple and precise: for the best result

- Wood connectors
- Post bases
- Balcony posts / fence posts
- Tools / accessories
- always up to date with www.pitzl-connectors.com

Manufacturer:

Pitzl Metallbau GmbH & Co. KG
Siemensstraße 26
84051 Altheim - Germany
Tel.: +49 8703 9346-0
Telefax: +49 8703 9346-55
Email: info@pitzl-connectors.com
www.pitzl-connectors.com

We recommend our distributor:



ETA-11/0295 ETA-10/0413

For more information and technical details, downloads and helpful video tutorials: www.pitzl-connectors.com.
Alternatively, our competent staff are always available for advice: +49 8703 9346-0.